

TRENDS

A Newsletter of the Mississippi Poultry Association

PROTECTING YOUR COMMERCIAL POULTRY INVESTMENT AND REDUCING UNNECESSARY INSURANCE CLAIMS

Jonathan Moon, Mississippi State University Extension Instructor

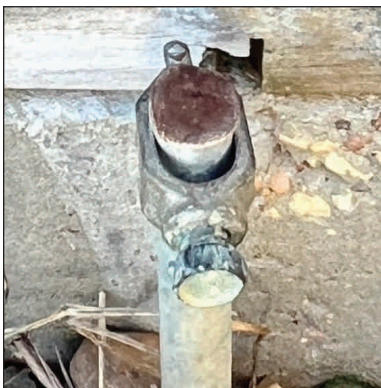


If you own a farm and produce poultry commercially, chances are you have a rather large financial investment wrapped up in your operation. Not to mention, all the sweat equity you may have poured in over the years. It is also no secret that insurance coverage has been and is still an issue affecting Mississippi poultry growers. Between increasing premiums, dropped coverage, and reductions in policies being written, this insurance issue is one that is not going to fix itself. More than likely it will require the insurance companies, growers, integrators, legislators, and poultry house builders working together to find a solution. One thing that would help is reducing the number of claims being filed and payouts being made for damages that could have been prevented.

I have witnessed first-hand just how devastating an unforeseen event can be. Methods used in new construction and the maintenance and upkeep of existing structures is super important when it comes to avoiding or mitigating disaster. The objective of this article is to serve as a reminder of things that need to be priorities when it comes to avoiding or mitigating damage and preventing unnecessary insurance claims on your commercial poultry farm, and more importantly hopefully preventing unnecessary financial loss or burden to the grower.

Grounding

Poultry growers should always be mindful when bad weather hits, not just because of high winds and rain, but also lightning. The chicken house is packed with electrical controllers, backups, motors, lights, generators, and other equipment that is necessary to keep birds alive. All this electrical equipment can suffer damage if struck by lightning. One way to make sure that you are as protected as possible is to make sure your houses are properly



Rounding rod with appropriate acorn style clamp.

continued on next page

WHAT'S INSIDE:

- VOTERS RETURN TRUMP, CONGRESSIONAL DELEGATION, SHAKE UP SUPREME COURT
- YOUR MEMBERSHIP DUES HELP TO PROTECT AND GROW THE POULTRY INDUSTRY
- KOCH FOODS' ED FLETCHER TO CHAIR MPA BOARD IN 2025
- OMELET SHOWDOWN AT THE STATE FAIR

continued from cover

grounded. A few of the most important locations houses are grounded are at electrical panels, generator frames, generator transfer switches, and feed bins. In more recent years it has become common to ground the re-bar located in the stem wall footing of the poultry house.

Checking for proper grounding is super easy, with help from an earth ground resistance meter or an electrician with one. Once the grounding systems are identified, use the resistance meter to check the grounding. A system that is properly grounded should have a resistance of 25 Ω or less. A copper-clad or galvanized steel grounding rod around 5/8-3/4 inch in diameter, and 8-10 ft long should be used. A heavy gauge copper wire should connect the equipment to the ground rod with the appropriate acorn style clamps (see images 1&2).

Barn structure

Of course, the poultry house is one of the single most important pieces of the poultry farm, and care should be taken to keep it in top-notch working order. It is a good idea to conduct a thorough annual inspection of the structure to avoid potential disaster or issues. Sometimes with poultry houses things may look good on the surface or at first glance, so you may have to pay close



Rotten trusses from fastener leaks

attention to details to catch an issue before it becomes a problem. The roof is very important to keeping the house in good shape. All it takes is one small area of the roof to sustain damage which could cause a single truss to fail, creating a domino effect, which can bring down large sections or even entire roofs. If you have leaks in your roof, you need to address these as soon as possible. When it's raining or immediately after a storm take time to look for leaks. As you walk the houses, look for wet spots or water running down the interior walls and sagging and/or dripping spots in the ceiling, which are good indicators that there may be issues and leaks in your roof. Just because you do not see visible signs of leaks doesn't mean you have nothing to worry about. Over time with hundreds of heat cycles on the roof and exposure to the elements, you can start to see deterioration and loosening of the roof fasteners and sealing washers. If the screws back out of the purlins and the sealing washers begin to leak, this can cause the wood to begin to deteriorate. Sometimes it can be a slow process with no visible signs that it is happening. (See images 3 & 4)

It is a good idea to visually inspect the roof and ceiling for dips or buckles as well as fasteners that appear to be backing out. A dip in the ceiling could be a spot where insulation is wet and sagging or a truss that is failing. In addition to an

external inspection, the roof trusses should also be inspected from inside the attic. The attic space can be accessed through a series of scuttle holes in the chicken house ceiling. You should look for areas of discoloration, rot, separation/loosening of truss gang nails, truss bowing, and improper insulation coverage that can cause sweating and lumber rot. An area that commonly causes structural support issues is truss junctions where gang nails become loose. The attic area of a chicken house is commonly a dry environment that over time can cause gang nails to back out. With routine inspections this issue can be easily and inexpensively be corrected before major issues occur. Another area of concern is the roof truss tail and the outer most purling. Deterioration in the roof truss tail and purling or loose fasteners can create an area of weakness causing straight line winds to easily lift the roof. If the truss tail is in good shape one way to better secure the roof edge is to replace the outermost purling with a metal purling secured to the truss with longer screws and tying the roof tin with the appropriate new screws (see images 5&6). In new construction builds it may also be beneficial to incorporate a 2"x6" fascia type board to the outer end of the truss tail along with the conventional purling. This added 2"x6" gives a stout anchoring point for longer fasteners to secure the tin and tremendously adds to rigidity of the roof system. Another potential way to reinforce the roof system on new builds is to consider strapping the junctions of the purlings to the trusses skipping every other one and staggering from eve to peak.

Inspecting the ceiling is also important. Growers and service techs should look for holes in the try-ply or places where strapping material staples fail and sag which could cause separation at the try-ply seams. These holes in the ceiling could cause damp air to enter the attic causing deterioration issues over time.

Another area worthwhile to inspect is the side walls. Over time, sidewall posts can begin to deteriorate when they are put into the ground or stem wall. Materials with constant contact with

chicken litter, such as concrete and wood, can begin to break down over time. Where the wall attaches to the roof is also an area of concern. Most poultry houses constructed today will have knee braces to help sturdy the house, especially from heavy winds that may want to push houses to one side or the other. These braces tie the sidewall post to the roof trusses to prevent lateral deflection of the house. If your houses do not have knee braces and you plan to be growing well into the future, it may be an investment that you want



Traditional 2 x truss tail purling



Replaced metal purling and truss tail repair

continued on page 5



EMERGING
TRENDS
A Newsletter of the Mississippi Poultry Association

2024 ■ Issue 4

GROWER
 ADVISORY COMMITTEE

- Ricky Boler** ■ *Peco Foods*
- Stanley Brewer** ■ *Mar-Jac Poultry*
- Kim Caldwell** ■ *Peco Foods*
- Michelle Carter** ■ *Koch Foods*
- Sammy Compton** ■ *Tyson Foods*
- Jimmy Dunn** ■ *Tyson Foods*
- Todd Dupre** ■ *Tyson Foods*
- Dwight Easterling** ■ *Tyson Foods*
- Jobie Evans** ■ *Amick Farms*
- Perry Feazell** ■ *Tyson Foods*
- Jeren Ferguson** ■ *Mar-Jac Poultry*
- Taylor Hickman** ■ *Wayne-Sanderson Farms*
- Kendall Hughes** ■ *Tyson Foods*
- Billy Hyatt** ■ *Amick Farms*
- Danny Madison** ■ *Amick Farms*
- Sean McDonald** ■ *Amick Farms*
- Peter McKinley** ■ *Wayne-Sanderson Farms*
- Dan Nguyen** ■ *Tyson Foods*
- Stan Norwood** ■ *Amick Farms*
- Brian Rhodes** ■ *Koch Foods*
- Kevin Rhodes** ■ *Koch Foods*
- David Robinson** ■ *Peco Foods*
- Kevin Shirk** ■ *Peco Foods*
- Josh Slay** ■ *Peco Foods*
- Kenneth Upton** ■ *Wayne-Sanderson Farms*
- Jon Wilson** ■ *Peco Foods*

MISSISSIPPI
 POULTRY ASSOCIATION

- Mack Walker** ■ *Chair*
- Ed Fletcher** ■ *Vice Chair*
- Kevin Rhodes** ■ *Grower Advisory Committee Chair*
- Mark Leggett** ■ *President*
leggett@mspoultry.org
- Lauren Fortenberry** ■ *Event Coordinator*
fortenberry@mspoultry.org

If you want to join the Mississippi Poultry Association as a Grower Member, call the MPA office at (601) 932-7560 for more information!

IN THIS ISSUE

Protecting Your Commercial Poultry Investment And Reducing Unnecessary Insurance Claims..... **COVER**

Member Spotlight: Poultry South **2**

Supplementing Day-Old Commercial Chicks With Hydrating Gel Beads..... **3**

Gov. Reeves Directs 2024 MPA Food Donation To Miss. Food Network, Salvation Army **5**

Voters Return Trump, Congressional Delegation, Shake Up Supreme Court **7**

Federal Judge In Texas Temporarily Stops Federal Small Business Tax Filings..... **8**

Enterococcus In Broiler Chickens: Another Emerging Threat..... **9**

Broiler Industry Provides 1.4 Million Jobs And \$450 Billion In Economic Impact: New Study **11**

MPA Poultry Health Seminar Schedules For February 19 At Miss. Ag Museum **12**

Miss. Poultry Foundation Provides Scholarships Allowing High School Students To Take MSU Poultry Science Classes..... **13**

Us Poultry Foundation Awards Recruitment Grant To MSU Poultry Science **13**

Mississippi 4-H Poultry Students Compete Nationally..... **14**

Your Membership Dues Help To Protect And Grow The Poultry Industry..... **16**

Expanding Minds With The 4-H Poultry Chain Project..... **19**

Koch Foods' Ed Fletcher To Chair MPA Board In 2025..... **22**

Southern Ag Credit Travel Grant..... **25**

Legislature Faces Full Agenda After Summer Committee Works..... **27**

Transportation Update: Record Project Funding With A Focus On Bridges.... **29**

Recipe: Skillet Barbeque Chicken Dip **30**

Trump Taps Lee Zeldin To Lead EPA - What Does It Signal For Agricultural Businesses..... **31**

Omelet Showdown At The State Fair **33**

Upcoming Events **BACK COVER**

CONTACT INFORMATION

110 Airport Road South, Suite C ■ Pearl, Mississippi 39208
 Phone: (601) 932-7560 ■ www.mspoultry.org

MEMBER SPOTLIGHT:



THE POULTRYSOUTH TEAM AT SOUTHEASTERN LAND GROUP

HELPING POULTRY FARMERS SINCE 2012
NOW SERVING MISSISSIPPI!

***As the leaders in marketing poultry farms,
what do we bring to the table?***

Specialized Expertise

The PoultrySouth Team at Southeastern Land Group specializes in helping buyers and sellers of poultry farms across the Southeast.

Comprehensive Support

Whether you're buying or selling, we provide expert guidance through every step of the process to ensure a smooth and successful transaction.

Proven Results

Our extensive experience and industry knowledge make us the trusted choice for poultry farm sales.

Industry Connections

We connect you with trusted lenders, contractors, and other professionals to support your farm sale or purchase.

Dedicated Team

Our passionate professionals are committed to helping buyers and sellers achieve their goals in the poultry farming industry.

**JASON &
DAWNE
TAYLOR**
LICENSED IN MS



**JACK
GABRIEL**
LICENSED IN LA & MS



WE ARE READY TO SERVE MISSISSIPPI!

256-475-0490 • PSTEAM@POULTRYSOUTH.COM

WWW.POULTRYSOUTH.COM



SUPPLEMENTING DAY-OLD COMMERCIAL CHICKS WITH HYDRATING GEL BEADS

Jonathan Moon, Mississippi State University Extension Instructor



Getting chicks off to a good start early on is critical for maximizing their genetic potential, performance, and ultimately, grower profit.

Chicks are most efficient at converting feed to growth the younger they are, so creating a comfortable environment that



Up close picture of gel beads

is conducive to chick movement is super important. Getting chicks to feed and water as soon as they arrive is the #1 objective to help minimize mortality due to dehydration and maximize body weight during that first week of life.

One way to achieve this is through proper preparation and management of the house, starting before the chick ever arrives on the farm. Another tool that could be utilized to boost early feed and water intake is the application of supplemental hydration gel beads (HGB) on top of the feed at placement. Research providing the potential benefits of HGB supplementation is quite limited, which makes it a guessing game when determining if it is a worthwhile investment. To help quantify these benefits, a trial was conducted using supplemental HGB at broiler chick placement and two commercial-sized poultry research houses at the Mississippi State University Poultry Research farm.

There are many supplemental HGB products on the market today that are enriched with various nutrients and gut health supplements. The water-based gel beads used in this trial were enriched with electrolytes and betaine to promote hydration (figure #1). All ingredients used in the manufacturing process are contaminant-free and sterile, and they have a highly visible green color, helping attract chicks to the feed. The beads are

designed to be used as a feed topper before placement (figure #2). The beads utilized in this experiment were commercially produced in an FDA-approved facility.

Prior to chick placement, chick trays and jumbo feed lids in treatment pens were topped with HGB at the manufacturer's recommended rate, control pens received no supplementations. Beginning and ending chick weights and daily mortality counts were recorded for the 7-day trial.



Feed topped with gel beads after placement

Although not deemed statistically different, trends were observed from the trial results for 7-day mortality and 7-day body weights. There was a numerical improvement in 7-day mortality for chicks that received supplemental HGB (1.25%) compared to the control group, which was 1.58%. Chicks receiving supplemental HGB at placement also showed numerical improvement in 7-day body weights of 6.03 oz compared to the control group of 5.96 oz. Although more research is needed, there are anecdotal reports that HGB products (such as the ones tested at our farm) produce positive results when utilized in situations when stress levels are high, or chick quality is an issue. While overall bird performance needs to be documented, this preliminary data can be utilized to help determine if HGB supplementation is a worthwhile investment for growers to help birds off to a good start. In addition to commercial producers, HGBs could be a benefit to backyard poultry enthusiasts as well as game bird producers. ■

INTERNATIONAL PRODUCTION & PROCESSING EXPO GROWER DAYS

Admission Only \$5 (USD) | Jan. 28-30, 2025 | Georgia World Congress Center | Atlanta, Ga., USA



Compliments of
U.S. Poultry & Egg Association
American Feed Industry Association
and the Meat Institute



This is a great opportunity to network with others who share similar interests and concerns.

To take advantage of the reduced admission fee, you must be a U.S. contract grower and bring this coupon along with a completed registration form to a cashier in the B or C Building registration lobby of the Georgia World Congress Center. Preregistration is not available.



Protection against infectious laryngotracheitis (ILT)
powered by VAXXITEK®

The POWER^{to} PROTECT uniquely and conveniently

VAXXITEK® HVT+IBD+ILT provides:



A solid immune foundation



Protection against infectious laryngotracheitis,
Marek's and infectious bursal diseases in one shot



Proven safety for your flock



The latest innovation from the manufacturer
of VAXXITEK® HVT+IBD

*Put the power of protection in your hands with
precision-engineered VAXXITEK® HVT+IBD+ILT.*

PREVENTION WORKS

Shaping the future of poultry health

VAXXITEK® is a registered trademark of Boehringer Ingelheim Animal Health USA Inc.
© 2020 Boehringer Ingelheim Animal Health USA Inc., Duluth, GA. All rights reserved. US-POU-0022-2020 109043



GOV. REEVES DIRECTS 2024 MPA FOOD DONATION TO MISS. FOOD NETWORK, SALVATION ARMY

Gov. Tate Reeves directed the Mississippi Poultry Association's annual donation of poultry and eggs to the Mississippi Food Network and the Salvation Army.

Starting in 2011, the members of the MPA began an annual donation of chicken and eggs to the governor, who chooses a charity to distribute the food to needy families.

This year, the MPA delivered 59,500 pounds of chicken meat and 129,600 On December 12. The charities distributed the products that amounted to 369,200 servings of protein before Christmas. The MFN serves 430 agencies across the state.

"I'm grateful to the Mississippi Poultry Association for always stepping up to help ensure no Mississippi family goes hungry during the holiday season," said Governor Tate Reeves. "The Mississippi Food Network and the Salvation Army do a tremendous job serving Mississippians, and I thank them for accepting this donation to help end hunger in our state."

"This has been a difficult year for many, and the 32,000 employees of the state's poultry industry want to help their fellow Mississippians this Christmas season," said MPA Chairman of the Board Mack Walker of Tyson Foods. "We appreciate Gov. Reeves coordinating this effort."

Dr. Charles Beatty, MFN CEO, said the donation will benefit families, "who do not know where their next meal is coming

from."

"We sing your praises, not just at Christmas time but all throughout the year for how you support this agency, said the Salvation Army's Major Timothy Delaney.

Since the program began, MPA members have donated 862,352 pounds of chicken and 1,882,600 eggs, which totals 5,332,008 servings of protein.

In addition to the 32,000 people that work in the industry and the 1,700 farm families that raise these chickens and eggs, another 66,400 jobs are generated because of the poultry industry. Poultry is Mississippi's largest agricultural industry with a total economic impact of \$27.8 billion, according to the most recent report by the National Chicken Council and the U.S. Poultry and Egg Association.

These products raised on Mississippi farms come from Amick Farms, Cal Maine Foods, Koch Foods, Mar-Jac Poultry MS, Peco Foods, Tyson Foods and Wayne-Sanderson Farms. Each company individually donates products throughout the year to various charities, but they come together through the Mississippi Poultry Association once a year to make this donation to the governor.

Each American eats on average 100 pounds of chicken and 284 eggs per year. One egg or four ounces of chicken equals a serving of protein. ■



Paul Billingsley, MPA Treasurer, Wayne-Sanderson Farms; **Stacey Jordan**, Director of Development, MFN; **Mark Leggett**, President, MPA; **Major Timothy Delaney**, Salvation Army; **Mack Walker**, MPA Chairman, Tyson; **Scott Mckinon**, Tyson



Rolanda Alexander, Social Services Program Director, SA; **Mack Walker**, MPA Chairman, Tyson; **Major Timothy Delaney**, Salvation Army; **Dr. Charles Batty**, CEO, MFN



MPA, staff from MFN and SA

continued from inside cover

to have a closer look at and determine if it is something you can spend the money on.

Something that can be an issue for broiler breeder growers when trying to get insurance coverage is the house design. Typically, breeder houses are connected by one long hallway needed to move eggs to a central egg cooler. Although this makes egg collection and movement from one house to another much easier, it can be a problem when trying to get insurance coverage because it is considered one structure and not multiple houses. If fire starts in one house, it can easily move down the hallway and into another house or all of them. Fire walls can be installed to help prevent the spread of fire, but coverage can still be an issue. Some house builders are considering using an enclosed conveyor system that will transfer eggs to a central location but break the structure up so that it will be considered multiple structures instead of one.

Conclusion

If you grow chickens commercially, you more than likely have a lot of money and time invested in your operation. Taking deliberate preventative action on a routine basis is necessary to protect both your houses and your flock from damage and in the end your bottom line. When looking at the insurance issue that is affecting the industry, we must think about the long game and how reducing preventable insurance claims can potentially help us in the future. While preventing some claims may not completely solve the issue, I believe it can make a meaningful difference over time. To prevent yourself from getting caught with your pants down and becoming a statistic, it is recommended that growers develop a schedule to address/inspect the house structure on a routine basis. This article is a first in a series meant to focus on preventing disaster and minimizing loss. Look for another article in the spring issue. ■

Congratulations

TOP 3 BEST MS CHICKEN SALADS



Patty's Pans
Lucedale, MS



Scranton's
Pascagoula, MS



Beachside Bistro
Bay Saint Louis, MS

This year marked a new participation record!
With over 150 restaurant nominations and over 1600 votes
we are pleased to announce the top 3 restaurants for the
2024 MS BEST CHICKEN SALAD

Thank you Mississippi!



A team of judges will visit and score the top nominated restaurants to determine the winner. Join us in the main arena at the
Dixie National Rodeo
Thursday, February 13th, 2025
where we will announce the
2024 Best MS Chicken Salad.

Top 10 Nominations

- Patty's Pans - Lucedale, MS
- Scranton's - Pascagoula, MS
- Beachside Bistro - Bay St. Louis, MS
- Fallon's Gourmet - Gulfport, MS
- The Bakery & Cafe' - Carthage, MS
- Dragon Fly - Bay St. Louis, MS
- Retha's Kitchen - Richton, MS
- Beagle Bagel - Madison, MS
- Rail Road Pizza - Flora, MS
- Sweet Tea & Biscuits Cafe' - Tupelo, MS

In the event of disqualification, the runner up will be scored.

VOTERS RETURN TRUMP, CONGRESSIONAL DELEGATION, SHAKE UP SUPREME COURT

Mississippi voters on Nov. 5 sent Donald Trump back to the White House and all incumbent members of Congress back to the U.S. Capitol.

In non-partisan judicial elections, state Sen. Jenifer Branning, R-Philadelphia, unseated incumbent Central District Supreme Court Justice Jim Kitchens after an extremely close runoff election on Nov. 26.

President Trump received 1.4 percent fewer votes than he did in 2020, while Democrat Kamala Harris received 13.7 percent less votes than Joe Biden four years ago. Turnout this year was 1.225 million compared to 1.313 million in 2020, or 6.7 percent less.

Roger Wicker handily won reelection for a third six-year term in the U.S. Senate where he is expected to serve as chairman of the Armed Services Committee.

She was not on the ballot but after the election, Sen. Cindy Hyde-Smith said she was not interested in the Secretary of Agriculture position in the Trump cabinet. Rumors were circulating that she would be the nominee.

In the U.S. House, Bennie Thompson, first elected in 1993 and the state's only Democrat, was reelected in the 2nd District. Next in seniority is Rep. Trent Kelly, who won re-election for a fourth two-year term in the 1st District. Rep. Michael Guest was unopposed for his third term in the House from the 3rd District. Finally, Rep. Mike Ezell easily won election in the 4th District in southeast Mississippi.

Two of the three contested judicial races went to runoffs. Sen. Branning led five candidates in the Central District Supreme Court general election. Kitchens was second. In the Court of Appeals 5th District Amy St. Pe led the three-person general election and defeated Jennifer Schloegel in the Nov. 26 runoff.

The Miss. Poultry Association Political Action Committee, as well as other business groups, supported Branning. Kitchens, who at 81 was running for a third eight-year term, was supported by trial lawyers. Had he been re-elected Kitchens would have become Chief Justice upon the retirement of Mike Randolph.

The race for the Southern District Supreme Court slot held by Dawn Beam resulted in her defeat of David Sullivan, son of former Supreme Court Justice Michael Sullivan. MPA-PAC supported Beam.

Branning's election means Gov. Tate Reeves will set a special election in Senate District 18 composed of Neshoba, Leake, and Winston counties to fill her seat in early 2025.

There will also be other legislative special elections in 2025. A three-judge panel of the U.S. Fifth Circuit of Appeals in July ordered the Legislature to redraw its districts to create two new black majority districts and one more House black majority district. The Senate districts are in DeSoto and Forrest counties, the House district is in Chickasaw and Monroe counties. The 52-member Senate currently has 15 black voting age population (BVAP) districts, and the 122-member House has 42 districts with a BVAP majority.

Legislators have been working behind the scenes to move

precincts around to comply with the court order. Redrawing district lines will require every incumbent who adds or loses voters to run in a special election so there could be as many as 17 legislators facing voters in 2025.

Next year elections for municipal positions are scheduled. In most years, several legislators decide to run for mayor or city council or board of aldermen which could create more legislative special elections.

The 2025 elections calendar from the Secretary of State's Office is shown below:

JANUARY

- 2 Qualifying Period Begins: First day candidates may file petitions and/or qualifying statements and pay qualifying fees for municipal offices.
- 31 Qualifying Deadline: Party primary and independent candidates for municipal offices.

APRIL

- 1 PRIMARY ELECTION DAY for municipal offices.
- 22 PRIMARY RUNOFF ELECTION DAY: for municipal offices.

JUNE

- 3 GENERAL ELECTION DAY FOR MUNICIPALITIES:

NOVEMBER

- 3 Special Election

DECEMBER

- 2 SPECIAL RUNOFF ELECTION DAY (lawmakers in 2024 moved runoffs to 4 weeks from three after the general election).



LEVEL UP

BECOME A SPONSOR!

POULTRY MANAGEMENT SCHOOL

MAY 15, 2025

MSU College of Veterinary Medicine
240 Wise Ctr Drive
Mississippi State, MS 39762

601-932-7560
mspoultry.org

We appreciate our sponsors and look forward to seeing their brand/logo around our events.

FEDERAL JUDGE IN TEXAS TEMPORARILY STOPS FEDERAL SMALL BUSINESS TAX FILINGS

A federal judge in Texas on Dec. 3 halted the Corporate Transparency Act (CTA) which requires small businesses to file burdensome Beneficial Ownership Interest BOI Reports by Jan. 1, 2025.

U.S. District Judge Amos Mazzant in the U.S. District Court for the Eastern District of Texas issued a nationwide injunction at the request of a family-run firearms and tactical gear retailer, called Texas Top Cop Shop Inc., among other co-plaintiff businesses and the Libertarian Party of Mississippi, according to Bloomberg.com. As a result of the ruling, an estimated 32.6 million businesses will not be required to report stakeholder information to the Treasury Department.

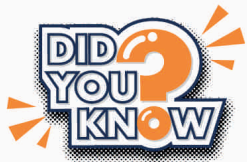
“For good reason, Plaintiffs fear this flanking, quasi-Orwellian statute and its implications on our dual system of government,” Judge Mazzant wrote. He said the CTA was beyond the authority of Congress under the U.S. Constitution and made the injunction nationwide because the National Federation of Independent Businesses was a plaintiff.

The stated purpose of the law was to uncover money laundering, but the judge, according to Forbes.com, “rebuked

the CTA for overstepping constitutional boundaries. He noted that corporate regulation has traditionally fallen within the states' jurisdiction. By mandating federal oversight of corporate ownership, the CTA disrupts the balance of power foundational to the U.S. federalist system. Furthermore, the court found that the act burdens businesses with significant compliance costs—projected to exceed \$22 billion in the first year alone—without clear safeguards against misuse of collected data.”

The Department of Treasury could appeal the decision, but on Jan. 20, the Trump Administration will take office which could change the government's position on the law.

The NFIB responded by saying “We argue that the Corporate Transparency Act (CTA), which established the BOI requirements, exceeds Congress's authority and violates the First and Fourth Amendments of the Constitution. NFIB has long argued that the CTA illegally imposes burdensome requirements on small businesses, infringes on free speech by forcing disclosure of private information, and constitutes an unreasonable search.” ■



How long does a chicken egg have to be incubated for before it hatches?

On average, if the temperature is correct a chicken egg will hatch in 21 days.

<https://www.funtrivia.com/questions/answers.dfm?did=5349>

MISSISSIPPI
LAND BANK

AGRIBUSINESS,
OPERATING, &
EQUIPMENT
FINANCING

For more than 100 years, we have developed trusted relationships with our borrowers, fellow stewards of the land. We're here to give you the resources you need to help grow your operation, while rooting for you every step of the way.

MSLANDBANK.COM



PROUD MEMBER OF
THE FARM CREDIT SYSTEM



Rooted in Relationships. Grounded in Giving. Advocates for Agriculture.

ENTEROCOCCUS IN BROILER CHICKENS: ANOTHER EMERGING THREAT

Martha Pulido-Landinez Dvm, Ms, Phd, Acpvd.



The Bacteria of the genus *Enterococcus* are negatively impacting poultry production worldwide. Although this genus has more than 60 species, emerging pathogenic *Enterococcus cecorum* (EC) and *Enterococcus faecalis* (EF) are the two bacteria of this genus causing significant economic losses in the United States poultry industry, especially in the broiler sector (Borst et al., 2016; Dunnam et al., 2022; Arango et al., 2024).

The reports of disease caused by EC and EF have increased exponentially over the last four years on necropsy cases and samples received at the Poultry Research and Diagnostic Laboratory (PRDL) of Mississippi State University (figure 1). Most of the time, clinical signs are not observed in acute disease. However, in some cases, the clinical presentation could be related to the site of infection, including lameness and depression. There are no specific reports of morbidity and mortality available. However, some authors report that EC infections can cause morbidity as high as 35 % and mortality of 15%. In general, the performance is affected in chickens infected with pathogenic EC, and there are reports of increased embryo mortality and low hatchability related to EF.

The main gross lesions caused by pathogenic EC include pericarditis and perihepatitis with whiteish exudates, multifocal hepatitis, femoral head necrosis (FHN), and vertebral osteoarthritis (VOA)/osteomyelitis (Figure 2) (Dunnam et al., 2023). For cases where EF is involved, omphalitis, pericarditis, perihepatitis, and multifocal hepatitis have been identified as the main lesions during necropsy of embryos 19 to 21 days and chickens younger

than 7 days (Figure 3) (Pulido et al., 2023).

These bacteria have implications for the birds' health and their productive performance. It is also important regarding animal welfare, especially due to the lameness problems observed in chickens affected by arthritis, femoral head necrosis, and leg muscle damage. A marked increase in mortality and condemnations in broiler plants has been reported worldwide in recent years (Jung et al., 2018; Ramirez et al., 2023). Additionally, this bacterium shows high antibiotic resistance, which has generated alarm regarding public health due to the potential presence of resistant *Enterococcus*, especially in chicken meat.

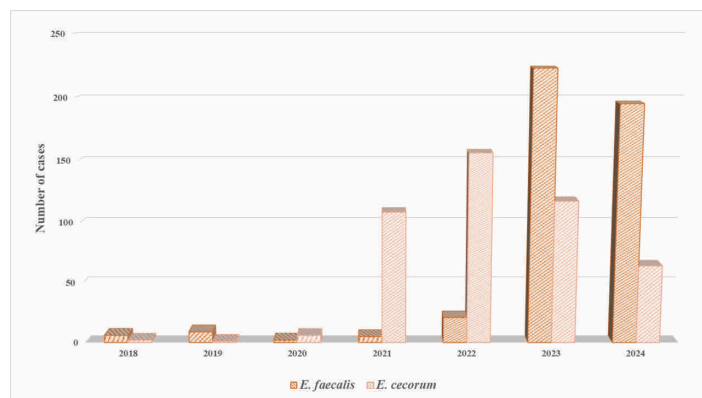


Figure 1: *Enterococcus cecorum* and *Enterococcus faecalis* affecting chickens: PRDL cases 2018 to November 2024.

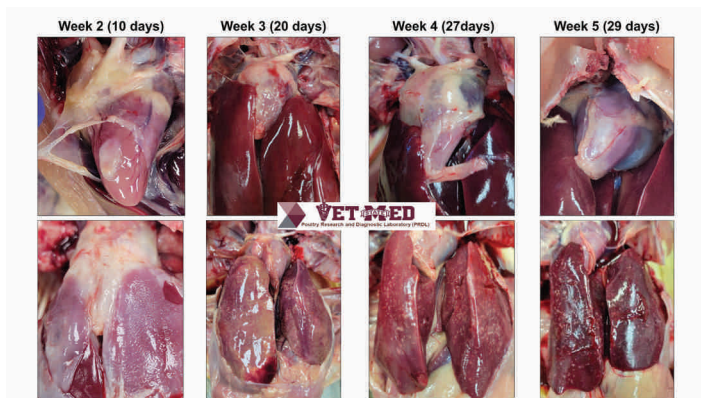


Figure 2: Macroscopic lesions observed in PRDL necropsy cases of chickens positive to *Enterococcus cecorum*. Mild to severe pericarditis with white exudates, perihepatitis with white exudates, and multifocal hepatitis. PRDL cases from 2018 to November 2024. Pictures courtesy of Dr. Martha Pulido-Landinez.

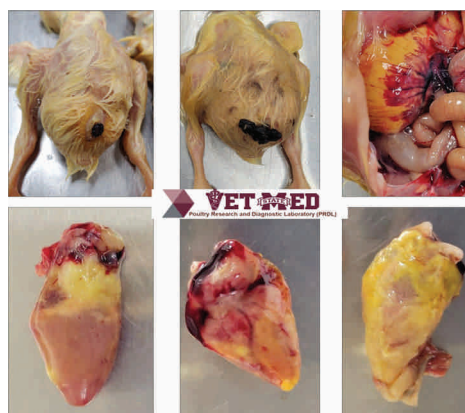


Figure 3: Macroscopic lesions observed in PRDL necropsy cases of chickens positive to *Enterococcus faecalis*. Navel pathology, omphalitis, and severe pericarditis in PIPs and chickens from 0 to 5 days. PRDL cases 2018 to November 2024. Pictures courtesy of Dr. Martha Pulido-Landinez.

Four learned lessons for four years dealing with the *Enterococcus* emerging trend:

1. EC/EF is causing current problems: An increase in case numbers was observed after the pandemic. What happened during the pandemic that may have changed EC/EF behavior? Situations like staff reduction, increased incubation of floor/dirty eggs, less cleaning frequency at the hatchery and/or farm, and biofilm growth (among others) could cause better

conditions for EC/EF adaptation to poultry environments and chickens. We need to break its adaptation up! Better cleaning and sanitation programs at the hatchery and chicken farms are needed.

2. *E. faecalis* is mainly found in eggs and embryos. This bacterium is usually used as a fecal contamination indicator. Is egg fecal contamination increasing? Has there been an increase in the number of floor eggs sent to the hatchery? The

continued on page 11



DIVERSIFIED

DiversifiedAg.com

SRP EVENGROW® tube heaters offer premium high efficiency features for optimal production and greater return on investment. Start your chicks right by using our patented ALTX technology for even floor temperatures.

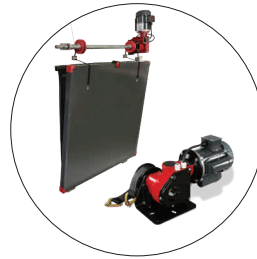
- Eliminates hot spots
- AUX, ATX and low clearance ALTX models
- 100% efficient reflector mounted horizontally for minimal convective heat loss
- Washdown ready



Controllers & Communication



Heating



Ventilation



Feeding & Watering

ALWAYS THE RIGHT FIT

Diversified's complete solutions enhance performance and maximize results.



type of incubator could be important: multistage incubation with less frequent cleaning and disinfection could be involved. Are hatcheries getting old, causing difficulties in cleaning them?

3. EF/EC presentation is age-dependent. Is it important for Enterococcus control? Yes! EF in eggs and/or baby chickens means the genus Enterococcus is present in them. So, EC may cause problems later.

4. The number of EC and EF cases at the PRDL has shown a seasonal pattern. Is EC presentation temperature-dependent? Apparently, this is the case. EC/EF presentation increases during warm months. Supporting this idea, some unpublished studies by the University of Arkansas show that the genus Enterococcus bacteria increases in the gut when the chickens are housed at high temperatures (Uribe et al. 2024; not published data).

References

Dunnam, G., Thornton, J.K., Pulido Landinez, M. Characterization of an emerging Enterococcus cecorum outbreak in a broiler integrator in the Southern US. Avian Dis, 67(2):1-8; 2023. <https://doi.org/10.1637/aviandiseases-D-22-00085>.

Differentiation of non-pathogenic from pathogenic Enterococcus cecorum field isolates based on the detection of the cpsO gene and its correlation with macroscopic lesions. Marcela Arango (speaker), Rebecca Mackey Jay Kay Thornton, Natalie Manginsay, Martha Pulido-Landinez. 73rd Western Poultry Disease Conference. Utah. April 14 – 17, 2024. https://static1.squarespace.com/static/6324cc48a5e67e5d682f1773/t/661ece22f6f244190367012e/1713294888142/WPDC_2024_Proceedings+Final.pdf

A novel broiler chicken leg problem: severe myositis caused by Enterococcus cecorum affecting medial thigh muscles – case report. Hugo Ramirez (speaker), Gunnar Dunnam, Jay Kay Thornton, Martha Pulido-Landinez. March 13-16, 2023. Sacramento, CA. Proceedings at: https://static1.squarespace.com/static/6324cc48a5e67e5d682f1773/t/6400fba0dcae832ad0f98336/1677786028158/WPDC_2023_Proceedings.pdf

Contamination of Enterococcus faecalis at the hatchery and presentation of septicemic disease in young broilers. Martha Pulido-Landinez, Gunnar Dunnam, Hugo Ramirez, Jay Kay Thornton. Oral presentation at AAAP Annual Meeting. June 11-14, 2023. Florida. Proceedings at: https://aaap.memberclicks.net/assets/2023_Annual_Meeting/2023%20AAAP%20Proceedings.pdf

Jung A, Chen LR, Suyemoto MM, Barnes HJ, Borst LB. A Review of Enterococcus cecorum Infection in Poultry. Avian Dis. 2018 Sep;62(3):261-271. doi: 10.1637/11825-030618-Review.1. PMID: 30339512. ■

BROILER INDUSTRY PROVIDES 1.4 MILLION JOBS AND \$450 BILLION IN U.S. ECONOMIC IMPACT: NEW STUDY

Updated study quantifies economic impact of the poultry industry in the U.S.

The U.S. Poultry & Egg Association (USPOULTRY), National Chicken Council, National Turkey Federation and United Egg Producers have released an updated economic impact study that highlights the positive impact the poultry industry has on jobs, wages, and federal and state revenue in the United States.

The study breaks down poultry into three subcategories: broilers, turkey and eggs. The broiler industry provides 1,375,952 jobs, \$90.9 billion in wages, \$449.5 billion in economic activity and \$36.7 billion in government revenue. The egg industry provides 163,829 jobs, \$10.5 billion in wages, \$58.2 billion in economic activity and \$4.68 billion in government revenue.

The poultry and egg industry in Mississippi generates \$24 billion in economic activity. See the chart with this article.

The data is hosted on interactive websites that can be viewed collectively or by individual product, and then sorted nationally, by state, congressional district, state house district or state senate district, and county.

For more information about the U.S. chicken industry’s economic impact visit: www.chickenfeedsamerica.org.

“This valuable tool shows the positive economic impact the poultry and egg industry have on our nation and communities, and we are pleased to continue providing it,” said Nath Morris, president of USPOULTRY.

“Chicken producers’ positive economic impact stretches from coast to coast, hits every sector of the U.S. economy and is felt in every congressional district,” added NCC

Interim President Gary Kushner. “We know that chicken is nutritious, affordable and versatile, but chicken also means jobs – whether it’s on the farm, in the processing plant, the transportation sector, manufacturing, retail or restaurants. This data will prove extremely helpful as we welcome a new Congress to Wahington next year. I want to thank USPOULTRY for funding and coordinating this effort.”

The economic impact study was funded by USPOULTRY. The study was conducted by John Dunham & Associates, based in New York City. The study was updated using the most current methodology available and uses data from 2024.

	Direct	Supplier	Induced	Total
Jobs(FTE)	31,930	37,111	29,341	98,382
Wages in Billions	\$1.38	\$2.21	\$1.49	\$5.08
Economic Impact in Billions	\$13.60	\$9.43	\$4.82	\$27.85

Companies that produce and process chicken in Mississippi employ as many as 31,930 people across the state and generate an additional 66,452 jobs in supplier and ancillary industries. These include jobs in companies supplying goods and services to the industry. These are good jobs paying an average of \$51,600 in wages and benefits. The chicken industry also generates sizeable tax revenues. In Mississippi, the industry and its employees pay about \$1.37 billion in federal taxes and \$861.94 million in state and local taxes. ■

MPA POULTRY HEALTH SEMINAR SCHEDULED FOR FEBRUARY 19 AT MISS. AG MUSEUM

The Mississippi Poultry Association's 11th annual Poultry Health Seminar will be February 19, 2025, in the Forestry Auditorium at the Mississippi Agriculture and Forestry Museum. The tentative schedule is shown below. MPA is seeking PAACO animal welfare training credits for this seminar and also applying for RACE credit for veterinarians. To be a sponsor and/or to register, contact Becca at MPA, martin@mspoultry.org or 601-932-7560. ■

8:40	Danny Magee	Welcome	12:05	LUNCH	
8:45	Dan Domingo	Adjuvant Combinations In Pullet Vaccines	12:55	Brandon Doss	Avian Paramyxovirus
9:10	Li Zhang	Identification Of Novel Antigens For A Universal Vaccine Against Avian Colibacillosis	1:30	Autumn Gregg	Enterococcus Cecorum
9:35	Dulmelis (DG) Sandu	Mycotoxins Role In Gut Health, The Immune System Of Broilers	1:50	Martha Pulido	"Five Tips For Managing and Control of Enterococcus SP. Infections"
10:10 BREAK			2:25 BREAK		
10:30	Roy Jacob	Importance of Immune Health on Secondary Disease Challenges	2:40	Weston Harwell	Importance Of Darkling Beetle Control
10:55	Jonathon James	Salmonella Framework Update	3:15	Chris Magee	Welfare Update
11:25	Jim Watson	Regulatory Update	3:30	Danny Magee	Adjourn
11:45	Natlaie Manginsay	MSU Poultry Lab: Disease Update			



THE POULTRYSOUTH TEAM AT SOUTHEASTERN LAND GROUP

AS THE LEADERS IN MARKETING POULTRY FARMS, YOU CAN TRUST THE POULTRYSOUTH TEAM TO TAKE CARE OF BUSINESS.

WE'RE WITH YOU EVERY STEP OF THE WAY.

You put in long hours, hard days (and sometimes nights), take risks that others would not, raise your family to know what good honest work is, and you keep on going long after others would have given up. Farming isn't easy. It is honorable. Farmers are essential. The world depends upon you. The PoultrySouth Team is dedicated to helping farmers like you, so that you can keep doing the work of taking care of us.

"It's nothing to see agents who will just get in a car and drive wherever to show somebody a farm and not know any of their background. They might not be qualified to buy a doghouse much less a poultry farm."

**Jacob Bowen - Seller & Member of
The PoultrySouth Team**



WE ARE READY TO SERVE MISSISSIPPI!

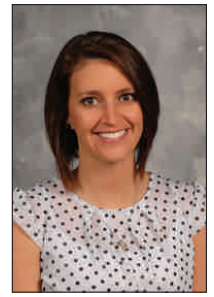
256-475-0490 • PSTEAM@POULTRYSOUTH.COM

WWW.POULTRYSOUTH.COM



MISS. POULTRY FOUNDATION PROVIDES SCHOLARSHIPS ALLOWING HIGH SCHOOL STUDENTS TO TAKE MSU POULTRY SCIENCE CLASSES

Dr. Jessica Wells, MSU Assistant Teaching Professor, Poultry Science



Fall 2024 semester has been one for the history books. For the first time ever, the Department of Poultry Science at Mississippi State University created and implemented the first Dual Enrollment course. This course allowed high school students to enroll and gain college credits while still in high school.

While it is becoming more common for high school students to begin college credits through dual enrollment, these courses are usually general education requirements, such as English composition, history courses, or college algebra. However, for the Fall semester this year our department offered dual enrollment for Commercial Poultry Production, PO 3313.

This course material teaches students the basics of the poultry industry and covers topics such as industry structure, history, general anatomy and physiology of poultry, management and details of the hatchery, feed mill, and processing plant. It also gives an overview of nutrition and general management of broilers, layers, pullets, and breeders. However, one of the most crucial topics covered in this course for high school students is information on the endless job opportunities available in the lucrative poultry industry. Whether students plan to enter the workforce directly after high school or pursue a bachelor's degree, Poultry Science is a wonderful choice to build a successful future career. Many students are simply unaware of what all the industry can offer, and this course is equipped to introduce and equip them with the tools needed to begin pursuing a lifelong career in poultry.

This course was offered to those students in agriculture pathways or FFA courses within high schools across the state

of Mississippi. Twenty-seven students from five different schools throughout MS chose to participate this semester and offer the credits. These schools included Ashland High School, Collins High School, Hickory Flat Attendance Center, Seminary High School, and Sumrall High School.

While College can be an expensive venture for students, these dual enrollment credits are offered at a reduced rate for students, making it much more affordable and attractive to gain college credits through dual enrollment. Additionally, ten of the twenty-seven students who enrolled this semester for dual enrollment credits also received a scholarship that covered the entire cost of tuition for the course. These scholarships were graciously donated by the Mississippi Poultry Foundation Board to the following students:

Benton Schools

Jaziah Bean, Paris Steward, Carlson Frison, Catera Hamer, Leland Brooks, Carley Gammon, Parker Ford, Queen Hardge

Sumrall School

Bada Reed, Kodi Warren

While this was the first semester dual enrollment credits have ever been offered for a poultry course, it has proven to be a successful venture and one we will continue to offer each year. The Department of Poultry Science hopes to expand dual enrollment offerings to more schools next Fall and reach a much larger population of high school students. If you are interested in the program or possibly seeing it offered at your local high schools. Please reach out to Dr. Jessica Wells at j.wells@msstate.edu for more information. ■

US POULTRY FOUNDATION AWARDS RECRUITMENT GRANT TO MSU POULTRY SCIENCE

Dr. Ken Macklin, Department Head



The USPOULTRY Foundation awarded a \$27,987 undergraduate student and retention award to Mississippi State University.

The Foundation awarded a total of \$324,215 to the six US Universities that have standalone Poultry Science Departments as well as to 22 other academic institutions that have poultry industry related programs. The range of the funding awarded was from \$1,000 to \$50,428.

The U.S. Poultry Foundation provides annual recruiting and retention funds to colleges and universities to attract or connect students to their poultry programs or to the poultry industry. The grants were made possible in part by gifts to the USPOULTRY Foundation from companies, individuals,

and families, in addition to funds earned over the years from the International Poultry Expo, part of the International Production & Processing Expo. ■



MISSISSIPPI 4-H POULTRY STUDENTS COMPETE NATIONALLY

Tannah Christensen, MSU Extension Instructor



State champion winners experienced the adventure of a lifetime on their trip to Louisville, KY, to compete in the 2024 National 4-H Poultry and Egg Conference November 20th-21st. The conference brings together youth nationwide for one common interest- poultry. Between the five contests (poultry judging, avian bowl, chicken barbecue, turkey barbecue, and egg chef challenge), 4-Hers compete and learn about the poultry industry and other valuable life skills- decision-making, reasons behind those decisions, and public speaking.

Among the 152 4-Hers from 26 states at the conference, 11 Mississippi participants from three counties showcased their skills at the event.

Wyatt Sebren, Paxton Lemoine, and Brayden Tullos went up against 20 teams and five individuals in the Poultry Judging competition. From judging hens to judging market poultry and eggs, the team put their knowledge and practice to the test in the intense and highly competitive 4-hour-long contest. Competition was fierce, and teams and individuals were neck and neck with scoring. This contest not only awards winners in the overall contest but also team and individual excellence in each of the three divisions (market

poultry, market eggs, and production hens). Congratulations to Rankin County's Paxton Lemoine, who brought home Market Egg Division Second Place Individual.



"I am proud to have been able to represent Mississippi 4-H in poultry judging at the national level. Getting to meet other 4-H members from across the nation was so

continued on next page



COMMUNITY BANK

LET OUR TEAM OF POULTRY EXPERTS FIND A SOLUTION TO FIT YOUR NEEDS



BEBE WILLIAMS
SENIOR VICE PRESIDENT

909 N 16TH AVENUE | LAUREL, MS
BEBE.WILLIAMS@COMMUNITYBANK.NET
601.422.4106
NMLS #415388



CORY RAWSON
SENIOR VICE PRESIDENT

323 E THIRD STREET | FOREST, MS
CORY.RAWSON@COMMUNITYBANK.NET
601.469.7097
NMLS #409191



WHITT CONNER
VICE PRESIDENT

1255 W GOVERNMENT ST. | BRANDON, MS
WHITT.CONNER@COMMUNITYBANK.NET
601.706.0309
NMLS #1691175

COMMUNITYBANK.NET | MEMBER FDIC

much fun. Thank you to Mississippi Poultry Association and everyone that made this trip possible for me and my team.”- Paxton Lemoine National Market Egg Division Second Place Individual from Rankin County

“I had a great time at the National 4-H Poultry and Egg Conference. I met many new faces and created some lifelong relationships that I will cherish forever. Thank you for all the support to help to make this experience possible, especially the Mississippi Poultry Association!”- Brayden Tullos National Poultry Judging Team Participant from Rankin County



Lily Grace Voyles, Mae Garrett, Maddie Willard, and Levi Thompson put their memorization skills to the test to compete against the top teams in the nation. Forty-six individuals made up the 14 teams for the Avian Bowl competition. Quick minds and hands are the name of the game, and our Mississippi team represented well in the tough competition.

“I really enjoyed meeting new people and hearing about other 4-H programs in other states. Avian Bowl gave me this great opportunity.”- Mae Garrett National Avian Bowl Participant from Union County

“I enjoyed competing in the 2024 National Avian Bowl Contest and learning more about the poultry industry.”- Levi Thompson National Avian Bowl Participant from Union County

Three cooking-related contests (Egg Chef Challenge, Turkey, and Chicken BBQ) make up the more individualized contests of the conference. Lucy Holloway, Jasper County, took on the Egg Chef Challenge competition against five other individuals. Lucy prepared her egg dish, Mexican Chorizo Quiche, in her cooking demonstration. She presented facts she gained about the egg industry and food safety while showcasing her demonstration skills, placing Fifth in the nation.

“I am so thankful for the opportunity to represent my county and Mississippi at nationals. The conference was such a great experience. Thank you to my county, state, and Mississippi Poultry Association for letting me represent you in my contest, Egg Chef Challenge.”- Lucy Holloway National Egg Chef Challenge Fifth Place Individual from Jasper County



Braving the cold, two of our Mississippi 4-Hers, Brianna Moore, Jasper County, and Abbye Buchanan, Rankin County, fired up the grills in Louisville for the Chicken and Turkey BBQ Contests. Jasper County’s Brianna Moore’s sweet and savory chicken BBQ recipe and presentation on the chicken industry brought home seventh place in the nation against eleven participants. Bringing home Third Place Turkey BBQ national title was Rankin County’s Abbye Buchanan with her turkey burger recipe and presentation on the turkey industry against a tough competition of seven participants.

continued on page 17



JOHN DEERE



Your DOWN-HOME DEALER

STRUT BY ONE OF OUR

16 locations

THROUGHOUT AR & MS OR VISIT US ONLINE AT

WWW.AGUP.COM



YOUR MEMBERSHIP DUES HELP TO PROTECT AND GROW THE POULTRY INDUSTRY

MPA's membership dues forms will go out in December. We hope you will agree the association's efforts are worth your investment.

Grower dues are only \$30 per year. Allied member dues are \$450 with \$30, if you choose, going to the Mississippi Poultry Association Political Action Committee. The Allied Industry dues form will include all the sponsorship opportunities available throughout the year. You can pay your dues at www.ms.poultry.org.

For growers, the two premier benefits of membership in MPA are Government Relations and Grower Relations. The Association works to support a unified industry and to represent the industry to our government and the public.

MPA exclusively represents the interests of all the poultry and egg industry at the local, state, and federal level and promotes a positive image of the industry to the public through the media.

The industry continues to face significant legislative and regulatory challenges. As regulations increase from USDA, FDA, EPA, Miss. DEQ, Miss. Dept. of Revenue, and other federal, state, and local agencies, it is increasingly important for the poultry industry in our state to communicate on

behalf of the industry to legislators and regulators.

The Association has a solid record and list of legislative accomplishments, including:

- o Eliminating the sales tax on electricity, propane, and natural gas for plants and for farms.
- o Lowering the sales tax on farm equipment and parts and labor for repairs to farm implements to 1.5%. This includes poultry house equipment and parts.
- o Doubling the amount farmers can borrow from the Emerging Crops Loan Program.
- o Preventing local governments from imposing their own local environmental setback requirements on poultry farms.
- o Working to maintain and increase funding for MSU divisions and state agencies important to poultry.
- o Securing funding for emergency road and bridge repair and increasing truck weight limits for feed and live-haul trucks.
- o MPA is working with legislators and other associations to curb the dramatic increases in property taxes and insurance rates on poultry houses.

continued on next page



YOUR DRIVE DRIVES US



A small business loan isn't just about the money.
It's about making the most of it.

To learn more, visit us at liveoakbank.com/poultry

©2024 Live Oak Banking Company. All rights reserved. Member FDIC. Equal Housing Lender. 🏠

continued from page 16

- o Providing access to information about critical issues impacting the poultry industry through mail outs and the Emerging Trends newsletter.

The Mississippi Poultry Foundation awards four \$4,000 scholarships annually to MPA grower member's children and poultry science majors. (The application form is on www.mspoultry.org)

Poultry growers occupy four seats on the MPA Board of Directors, giving them a strong voice in the direction of the organization. The Chair of the Grower Advisory Committee is a member of the MPA Executive Committee. Grower members are invited to attend the association's educational seminars and the Poultry Management School at Mississippi State for free.

We hope you will make the decision to become a part of the Mississippi Poultry Association and help us to maintain our position as the #1 Agricultural Commodity in the State of Mississippi. Please contact the MPA office at (601)932-7560 for more information. ■

continued from page 15

"Thank you Mississippi Poultry Association for sponsoring my trip to the National 4-H Poultry and Egg Conference in Louisville, KY. I had so much fun and learned a lot along the way about the turkey industry. I was able to meet 4-H members from other states and made some new friends! These memories I will never forget!"- Abby Buchanan National Turkey BBQ Third Place Individual from Rankin County.



"I am deeply grateful for the wonderful opportunity to represent Mississippi at the national chicken barbecue contest in Louisville, Kentucky. I have learned so much and met many amazing people. The memories I made at this national contest are ones I will cherish and carry with me throughout my life. Lastly, thank you to the Mississippi Poultry Association for making this wonderful opportunity happen."- Brianna Moore National Turkey BBQ Seventh Place Individual from Jasper County.

We are proud of each of our contestants for their determination, dedication, and commitment to these contests and preparing for the national event. Hard work and dedication pay off in the end. Congratulations to each of you!

Thank you to our donors who aided in the travel expenses and apparel for these 4-Hers. We truly appreciate your investment in the next generation.

For more on the poultry youth programs available in the state, contact Tannah Christensen, Extension Instructor at MSU Poultry Science Department, at t.christensen@msstate.edu. ■

 Entergy Solutions
BY ENTERGY MISSISSIPPI

Raise poultry. And your bottom line.



Our Agricultural Energy Solutions program can help lower your energy costs

Ventilation fans

Upgrading your farm to high efficiency variable frequency drive fan systems can help you take control of your energy use. And financial incentives cover **up to 75%** of project costs with custom rebates available for eligible customers.

Motor replacements

Be prepared for breakdowns with an energy-efficient emergency upgrade: You can get high efficiency motor replacements when you need them most by waiving the normal preapproval process. And you can **save 75%** (max of \$2,500) through incentives within six weeks after purchase when you submit an application.*

Let's grow your farm

To learn more about how you can benefit with the Agricultural Energy Solutions program and how to get preapproved, call **844-523-9979**, visit entergysolutionsms.com/agriculture or scan the QR code.



*Projects must achieve at least 10% energy savings to be eligible.

A message from Entergy Mississippi, LLC ©2024
Entergy Services, LLC. All Rights Reserved.
The Entergy Solutions program is an energy efficiency program and not affiliated with Entergy Solutions, LLC.
Authorized by the Mississippi Public Service Commission.



READY TO BUILD OR REMODEL? RELY ON US.



Bay Springs, MS	866-568-7985
Forest, MS.....	844-777-6761
Kokomo, MS	888-976-6135
Magee, MS	866-795-0604
Philadelphia, MS.....	855-230-6306
Waynesboro, MS.....	855-230-6307

© 2024 Hog Slat Inc. All Rights Reserved. Prices and promotions subject to change without notice. Hog Slat reserves the right to correct printing and pricing errors.

EXPANDING MINDS WITH THE 4-H POULTRY CHAIN PROJECT

Tannah Christensen, MSU Extension Instructor

In the Spring, 4-H participants across the state committed to caring for an animal through the 4-H Poultry Chain Project. Setting aside technology and textbooks, they took on the hands-on experience to broaden their minds and understanding of what's required to care for an animal.

They learned valuable life skills such as budgeting, responsibility, understanding the importance of biosecurity and disease awareness. What initially started as a simple 4-H summer project quickly expanded the minds of 170 participants across the state, ranging from ages 8-18. Of the 82 counties in Mississippi, 40 counties had participants commit to the project.

The summer-long project concluded at the 12th annual 4-H Poultry Chain Show hosted by the Mississippi State University Department of Poultry Science. The yearly event took place at the fairgrounds in conjunction with the Mississippi State Fair. Ninety-one participants joined us for the big event on October 12th and competed in one of the four categories, with the vast majority also competing in the optional showmanship category. Dr. Sara Orłowski, University of Arkansas, joined us for the event and judged our showmanship and bird categories.

In the words of Dr. Orłowski, "The 2024 Poultry Chain Project at the State Fair serves as an excellent opportunity for youth in the state to get involved with poultry early on. It was an honor to be able to judge this year and see all of their hard work come to fruition. Through their dedication and commitment to the poultry chain project, I knew I was looking at coming leaders with a passion for poultry."

A total of 32 placings were awarded in four categories (Junior Layer, Junior Meat, Senior Layer, and Senior Meat), with grand and reserve champions in each of the four, as well as a showmanship competition for both junior and senior classes. Because of our generous donors, a total of \$11,350 in monetary awards were awarded to the winners.

Donors included the following entities and individuals: Southern Ag



Credit, Mississippi Poultry Foundation, Mississippi Farm Bureau Federation, Cal-Maine Foods, Dr. Sue Ann Hubbard, Mr. Kelby King, Mr. Billy Conquest, and MSU Department of Poultry Science. This program would not have been possible without your gracious donation. Thank you for your support! If you are interested in donating to the poultry chain project or other poultry programs, please contact Tannah Christensen, Extension Instructor Poultry Science Department, t.christensen@msstate.edu 1.662.867.3715 or donate with the QR code below and mention State Poultry Programs in the comments



**Dr. Sue Ann Hubbard Mr. Kelby King
Mr. Billy Conquest**

We would like to congratulate the following participants for their hard work and success in the 2024 chain project.

Emma Wofford, Desoto County Senior Showmanship Grand Champion
Donation by MSU Department of Poultry Science \$300

Kaylin Hubbard, Tippah County Senior Showmanship Reserve Champion
Donation by Mississippi Poultry Foundation \$150

Heidi Hood, Forrest County Junior Showmanship Grand Champion
Donation by MSU Department of Poultry Science \$300

Truene Speck, Desoto County Junior Showmanship Reserve Champion
Donation by MSU Department of Poultry Science \$150

Truene Speck, Desoto County Junior Meat Grand Champion
Donation by Mississippi Farm Bureau Federation \$1,000

Haven Foster Simon, Pearl River County Junior Meat Reserve Champion
Donation by Southern Ag Credit \$500

1st Peyton Robinson, Itawamba County
Donation by Mississippi Poultry Foundation \$300

2nd Skylar Wilson, Union County
Donation by Mississippi Poultry Foundation \$250

3rd Stella Vasquez, Leake County
Donation by Mississippi Poultry Foundation \$200

4th Reese Rasco, Scott County
Donation by Mississippi Poultry Foundation \$150

5th Anna Carol Cochran, Leake County
Donation by Mississippi Poultry Foundation \$100

Jacob Kitchens, Lauderdale County Junior Layer Grand Champion
Donation by Southern Ag Credit \$1,000

continued on page 21

We Finance

Poultry | Land | Agribusiness | Equipment | Crops | Livestock | Timber | Aquaculture



First South is how you grow.



800-955-1722 | FirstSouthLand.com



continued on from page 19

Hunter Daniel Rule, Desoto County
Junior Layer Reserve Champion
Donation by Southern Ag Credit \$500

1st **Heidi Hood**, Forrest County
Donation by Dr. Sue Ann Hubbard \$300

2nd **Kaitlyn Rottman**, Madison County
Donation Mississippi Poultry
Foundation \$250

3rd **Jocelyn Lawrence**, Kemper County
Donation by Dr. Sue Ann Hubbard \$200

4th **Annie Rister**, Desoto County
Donation by Mr. Billy Conquest \$150

5th **Julie Chamberlin**, Desoto County
Donation by Mississippi Poultry
Foundation \$100

Kaitlyn Rottman, Madison County
Junior Cutest Coop Grand Champion
Donation by Mr. Kelby King \$150

Nylah Sullivan, Jackson County
Junior Cutest Coop Reserve Champion
Donation by Mr. Kelby King \$75

John Clayton Kitchens, Lauderdale

County Senior Layer Grand Champion
Donation by Southern Ag Credit \$1,000

Anna Laura Haden, Jasper County
Senior Layer Reserve Champion
Donation by Southern Ag Credit \$500

1st **Levi Thompson**, Union County
Donation by Cal-Maine Foods \$300

2nd **Kaylin Hubbard**, Tippah County
Donation by Mississippi Poultry
Foundation \$250

3rd **Ansley Hubbard**, Tippah County
Donation by Cal-Maine Foods \$200

4th **Emma Wofford**, Desoto County
Donation by Mississippi Poultry
Foundation \$150

5th **Chance Haden**, Jasper County
Donation by Mississippi Poultry
Foundation \$100

Layton Varner, Rankin County
Senior Meat Grand Champion
Donation by Southern Ag Credit \$1,000

Joy Kitchens, Lauderdale County
Senior Meat Reserve Champion
Donation by Southern Ag Credit \$500

1st **Emmy Tolar**, Marion County
Donation by Mississippi Poultry
Foundation \$300

2nd **Annalyn Grace Cates**, Lamar
County Donation by Mississippi Poultry
Foundation \$250

3rd **Brieleigh Willers**, Winston County
Donation by Mississippi Poultry
Foundation \$200

4th **Lulu Johnson**, Benton County
Donation by Mississippi Poultry
Foundation \$150

5th **Lucy Graham Turnage**, Oktibbeha
County Donation by Mississippi Poultry
Foundation \$100

Grayer Lane Salley, Webster County
Senior Cutest Coop Grand Champion
Donation by Mr. Kelby King \$150

Terin Long, Rankin County
Senior Cutest Coop Reserve Champion
Donation by Mr. Kelby King \$75

The Mississippi Poultry Foundation
has supported the Poultry Chain with
donations averaging \$3,000 or more
since 2013. ■



What do you call a female chicken under one year of age?
A pullet. A male chicken under one year of age is called a cockerel.

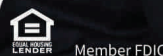
<https://www.funtrivia.com/questions/answers.dfm?did=5349>

YOUR POULTRY LOAN EXPERT

- New Construction
- Facility Improvements
- Purchase
- Expansion
- Refinancing
- Real Estate



301 S Court Street | Ellisville, MS 39437 | OFFICE 601-477-9490
CELL 601-624-9278 | NMLS #415383 | jswindle@firststatebnk.com



JAY SWINDLE
Senior Vice President | Lending

KOCH FOODS' ED FLETCHER TO CHAIR MPA BOARD IN 2025



The 2025 chair of the Mississippi Poultry Association Board of Directors will be Edward "Ed" Fletcher, Complex Manager for Koch Foods Inc. Ed has over 22 years of poultry experience and will begin his duties on January 1st replacing Mack Walker.

Born and raised in Vicksburg, he is a 1989 graduate of St. Aloysius High School. Ed continued his education at Mississippi State University obtaining a BS degree in Industrial Technology. Ed went on to work in various fields including lumber, plastics, electronics, and appliances prior to being led to a position in the poultry industry.

He began his career in poultry in 2002 as a plant engineer then moved to plant manager. Ed has now served as Complex

Manager for Koch Foods for the past 5 years.

"My main goal as chairman is to continue working towards Mack Walker's vision of building on the relationships with processing plants and getting them more involved within the association,"

Ed and his wife, Wendy, have been married for 27 years. Wendy is employed with the Rankin County School District and their daughter, Audrey, is currently a senior at The University of Mississippi.

Other members of the MPA Executive Committee are : Vice Chair Paul Billingsley, Wayne-Sanderson Farms; Treasurer James Faison, Mar-Jac Poultry; Immediate Past Chairman Mack Walker, Tyson Foods; Past Chairman Bobby James, Amick Farms; Executive Committee members at large Steve McLaurin of Peco Foods, and Dr. Ryn Laster of Cal-Maine, and Koch grower Kevin Rhodes, chairman of the Grower Advisory Committee. ■



What is the most numerous fowl in the world?

The Leghorn, with a dozen different color varieties, is the most numerous fowl in the world. It is renowned for its laying ability.

<https://www.funtrivia.com/questions/answers.dfm?did=5349>

BAADER

Turn Deboning Trim Into Ground Poultry Profits

The BAADERING process produces a superior ground poultry meat and is only achievable through our specially designed technology.





Merry Christmas

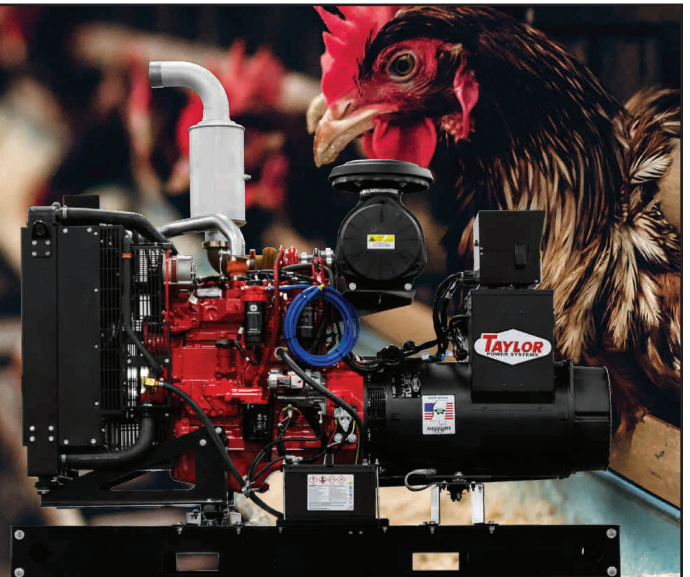
Merry Christmas! May this festive season be a time of celebration, reflection, and gratitude for the blessings in your life.



Mississippi Poultry Association, Inc.
Growing Mississippi's Economy Since 1937






THE TAYLOR POWER ADVANTAGE



LET US PROTECT WHAT'S MOST IMPORTANT TO YOU.

When power fails, farmers can depend on our American Made agricultural generators.

CALL US TODAY!

www.taylorpower.com | (601) 932-5674 | Follow Us:   



Work with the Top Ag Lender In The Nation

*ICBA named First Financial Bank as the
top ag lender in the nation for 2023 and 2024
in the \$1 billion asset category.*



Celebrating
90
YEARS

204 North Van Buren | Carthage, MS 39051 | 601-267-0095
www.ffb1.com | @FFBank1

*Contact one of
our lenders today!*



Lee McDill
AVP/Ag Lending Officer
lmcdill@ffb1.com



Michael Barnes
SVP/Ag Lending Officer
mbarnes@ffb1.com

Approved to offer SBA loan products under SBA's Preferred Lender Program. FSA Preferred Lender.

SOUTHERN AG CREDIT TRAVEL GRANT

Dr. Ken Macklin, Department Head,
MSU Poultry Science



The 2024 Mississippi Poultry Foundation's Southern Ag Credit Travel Grant will allow three graduate students to present their research at the International Poultry Scientific Forum held in January prior to the start of the International Production and Processing Exposition in Atlanta.

Southern Ag Credit donates \$1,500 per year for the travel grant awarded by the Mississippi Poultry Foundation. A total of 16 students have benefitted from the travel grant since 2016.

"Southern Ag Credit is pleased to assist Mississippi State University students in presenting their research at the IPSE. Their research will further the growth of the poultry industry. Southern Ag Credit is committed to investing in future



generations that will continue to ensure a strong poultry industry," said Brent Barry, chief credit officer of Southern Ag Credit.

Charis Waters is a PhD student under Dr. Pratima Adhikari at Mississippi State University, specializing in poultry nutrition research. She has participated in numerous nutrition trials aimed at improving laying hen

production and performance. Her recent work focuses on determining optimal branched-chain amino acid ratios in Hy-Line W36 laying hens across their lifecycle, from pullet development to late lay.

Her abstract that she will be presenting in Atlanta at the International Poultry Scientific Forum, which is part of IPPE is titled - "Understanding the Branched-Chain Amino Acid (BCCA) Interactions on Bone Morphology of Pullets (6-12 weeks of age)."

The objective of her study was to examine the role of branched chain amino acids on Hy-Line W-36 pullets (6-12 weeks old). Results from this study highlight the importance of improving branched-chain amino acid ratios to enhance bone morphology in layer pullets. Specifically, that a lower Val:Lys ratio combined with a higher Ile:Lys and Leu:Lys ratio in pullet diets may improve bone quality, supporting better skeletal health and growth potential in growing laying hens. Implementing these balanced BCAA ratios during the critical 6-12-week developmental stage may improve skeletal health, reduce the risk of bone-related issues, and support the long-term productivity of laying hens in the future.

Haley Fugate is a MS student under the advisement of Dr. Li Zhang. Her research focuses on understanding bacterial virulence and developing innovative solutions to combat poultry diseases, with a particular emphasis on reducing the impact of avian pathogenic E. coli through targeted interventions.

The title of her abstract at to be presented at IPPE is - "Assessment of pagP gene Function in Avian Pathogenic Escherichia coli pathogenicity using a Broiler Chick Challenge Model."

The goal of her research was to determine if the pagP gene is needed for an E. coli infection in broiler chickens. Results

suggest that the pagP gene plays a crucial role in E. coli virulence, as when it was deleted from the E. coli genome there was a significant reduction in birds' mortality and lesion severity. These findings highlight pagP as a promising target for vaccine development, offering a potential strategy to mitigate colibacillosis and improve poultry health and productivity.



Jorge Urrutia, originally from Guatemala, received his undergraduate degree in Animal Science at Texas Tech University. He then moved to Mississippi to pursue his master's at Mississippi State University in poultry science, focusing on management and nutrition.

Currently he is working on his PhD in Poultry Nutrition at MSU with Dr. Kelley Wamsley. His presentation at IPPE is entitled - "Maximizing 17 to 28 D Growth Performance of Broilers With and Without a Subclinical Necrotic Enteritis Challenge Through Corn Particle Size and Feed Quality."

The objective of his project was to determine the optimal combination of corn particle size (600, 900 or 1200 μm) and feed quality (40, 60 or 80% pellet) to maximize broiler chicken performance from 17 to 28 days of age. The results show that there was an improvement in feed conversion in birds fed a corn particle size of 900 μm vs either a 600 or 1200 μm . The research also showed that corn particle size of 900 μm and having a high percentage of pellets (>80%) in the feed produced heavier birds. Additionally, they observed less

severe necrotic enteritis in birds fed diets with most of the feed being intact pellets (>60%). This research suggests that feeding different corn particle sizes and high feed qualities can positively impact bird performance and potentially mitigate the impact of subclinical necrotic enteritis. ■



Since 1971

Foam Packaging Inc.

Quality Egg Cartons,
To-Go Trays and Cafeteria Serving Trays
Exceptional Service • Competitive Price

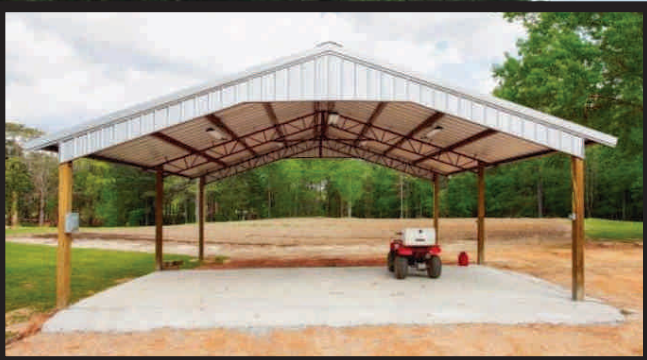
www.foam-packaging.com



QUALITY BARNES & BUILDINGS

(601) 797-3131
ozark-ag.com

4954 Hwy 49 North
Mt Olive, MS 39119



Utility Buildings



Litter Sheds



Barndominiums



Custom Shop Buildings

DESIGN & ENGINEERING | CONSTRUCTION | BUDGETING

LEGISLATURE FACES FULL AGENDA AFTER SUMMER COMMITTEE WORK

The 2025 legislative session begins Jan. 7 after a summer and fall filled with dozens of committee meetings and behind the scenes discussions on other issues.

Growers will be interested in legislation to be introduced to prevent the doubling of property taxes as is currently happening. The latest version of the Department of Revenue manual that guides tax assessors in setting values on all property resulted in a doubling of taxes on poultry houses. MPA will be supporting legislation to prevent such drastic increases.

MPA will again try to secure funding to strengthen poultry houses against tornadoes and hurricanes with the goal of bringing down insurance rates over time. Lawmakers last year provided \$2 million in funding for a similar program for residential property.

MPA will also support legislation to remove the last repeal date from the harvest permit law that authorizes the 88,000-pound truck weight limit. Removing the repealer will make it harder for legislators to lower the amount.

There are proposals to reorganize or reduce government coming from state officials.

Lt. Gov. Hosemann supports a reorganization of state government that has 200 boards, commissions, and agencies. MPA will be watching this legislation closely after attempts several years ago to reduce the Board of Animal Health's scope from policymaking to advisory only.

State Auditor Shad White released his "Project Momentum" audit of state government that identified around \$335 million in recurring waste across thirteen state agencies. Savings identified included from agencies owning too many underutilized vehicles, having too much unused office space, and spending too much on insuring state property.

Both the Senate and the House named committees to look at taxes. The House has a goal of eliminating the personal income tax which drops to a 4 percent flat tax in 2026 under previously approved tax cuts. The Senate, meanwhile, created a fiscal policy committee to consider balancing the known needs for funding and the impacts on the budget of revenue reductions.

Lt. Gov. Hosemann is more focused on eliminating the 7 percent tax on groceries. Speaker White has expressed support for cutting this tax in half. Cities, especially small towns, would have to be made whole because they receive 18.5 percent of the 7 percent sales taxes collected on all sales within their borders. In many towns groceries are a large part of all sales.

Questions by members in the House committee appear to indicate that their proposal could eliminate the sales tax

diversion to cities entirely and allow cities to replace the diversion with a local option sales tax. The funds not being diverted could then be used to lower income taxes.

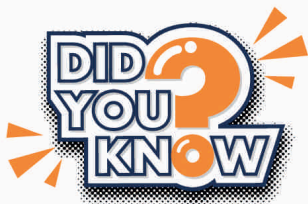
Legislators have been working on redrawing one House and two Senate districts as required by a July federal court order to make them majority black districts. Changing these districts will mean changes to other nearby districts requiring as many as 18 special elections later in 2025. The districts are in Hattiesburg and in Desoto County in the Senate, and Chickasaw and Monroe counties in the House.

Other issues under discussion this summer and fall for possible action in the 2025 session include:

- Increasing Labor Force Participation. A Senate Committee has been meeting to find ways to get more people working.
- Pharmacy Benefit Management (PBM) Restrictions. A House committee has been holding hearings on the practices of PBMs as they relate to independent pharmacists, who claim they are shortchanged on drug costs. Employers hire PBMs to keep drug costs affordable for employees.
- Steady Annual Transportation Funding. The Miss. Department of Transportation is again seeking a source of recurring funds for transportation projects. Also, the Emergency Road and Bridge Repair Fund (ERBRF) Advisory Board is recommending that the ERBRF created in 2018 receive continued funding.
- Certificate of Need reform. This committee investigated the law that requires the State Department of Health to approve new hospital and major clinic locations.
- Capital City Revitalization. The large number of derelict and deserted properties that belong to the state because taxes have not been paid is one subject the committee delved into.
- A Study Group on Women, Children, and Families will also propose legislation.

Other issues that could come up in 2025 include: expanding the number of people eligible for Medicaid, allowing early voting, allowing school choice, taking further steps to shore up the Public Employees Retirement System, redistricting circuit and chancery courts,

Jan. 20 is the deadline for the INTRODUCTION of general bills and constitutional amendments. Committees in the House and Senate must report them out by Feb. 4 for floor votes by Feb. 13. Work shifts to money bills which require floor action in the first chamber by Feb. 26. The session is scheduled to conclude April. 6. ■



The United States has the largest broiler chicken industry in the world with about 16 percent of production exported to other countries. The United States is the second leading broiler exporter in the world, behind Brazil.

National Chicken Council



EMERGING TRENDS 2025

A Newsletter of the Mississippi Poultry Association

Thank you for being a big part of our Emerging Trends family! In 2025 we see the MPA newsletter continuing its time-honored tradition of sharing educational and informative articles on poultry industry related issues. Issues that concentrate on how to save the producer money, comply with laws and regulations, and activities of the association and industry. This year we see Emerging Trends not only growing digitally, but its social media presence as well. We want your voice to grow in 2025 too!

We are pleased to offer a 10% discount for those contracting media placement in each issue and settling the account in full by March 31st, 2025. This includes both members and non-members alike. Your message now has the potential to reach 1,500+ homes in print and digitally accessed with each issue. Be loud. Be heard. Secure your space in the 2025 Emerging Trends Newsletter. Our members and followers are listening, what are you going to say?

Each year we feature a full-page Member Spotlight in each issue of the newsletter. This ad space shares an in-depth look at not just the brand, but who they are and how their goods and services aid the poultry

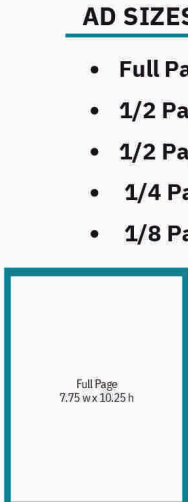
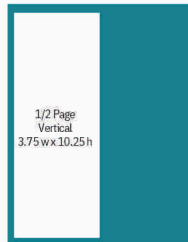
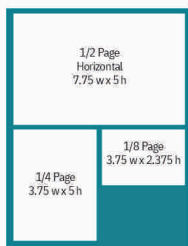
industry. This year we will also be publishing the Member Spotlight on our company website. To take advantage of this opportunity, the cost is \$450 and must be settled by March 31st, 2025. This is a very limited opportunity, so claim your space soon.

We have streamlined our billing process to facilitate more accurate records. Each ad order will receive one invoice, and applied payments will be reflected in the balance. Contracts with an open invoice will receive a copy during the first week of each month. Along with the initial invoice, we will include a link to the digital publications page. The current and past three years newsletter issues are available here for your convenience. This will also stand as the tear sheet for each publication. We understand “new and improved” takes time, but we are glad to clarify any questions you may have. We appreciate feedback and would enjoy hearing any suggestions or thoughts on how we can better serve our members and your advertising needs. Let’s grow together! Email or call to secure your space in 2025 MPA Emerging Trends.

Advertising Specifications

For more Information

Beca Martin • martin@mspoultry.org
 110 Airport Road South, Suite C • Pearl, Mississippi 39208
 Phone: (601) 932-7560 • www.mspoultry.org



AD SIZES

- **Full Page:** 7.75" x 10.25"
- **1/2 Page (horizontal):** 7.75" x 5"
- **1/2 Page (vertical):** 3.75" x 10.25"
- **1/4 Page:** 3.75" x 5"
- **1/8 Page:** 3.75" x 2.375"

	MEMBER	NON-MEMBER	DISCOUNT
• Full Page: 7.75" x 10.25"	\$450	\$600	When purchasing an ad in all 4 QTRS and paid in full by March 31st you will receive a 10% discount. Unpaid balances after the deadline result in loss of discount.
• 1/2 Page (horizontal): 7.75" x 5"	\$250	\$350	
• 1/2 Page (vertical): 3.75" x 10.25"	\$250	\$350	
• 1/4 Page: 3.75" x 5"	\$120	\$165	
• 1/8 Page: 3.75" x 2.375"	\$80	\$115	

PUBLICATION INFORMATION

• The Association newsletter, **Emerging Trends**, is printed quarterly. It contains educational and informative articles on a number of issues related to the poultry industry. These articles concentrate on how to save the producer money, law, compliance issues and promotional activities of the industry. More importantly, Emerging Trends provides an “Upcoming Events” section to announce various activities and functions of the Association. The newsletter is mailed to over 1200 MPA members and published online as well.

TRANSPORTATION UPDATE: RECORD PROJECT FUNDING WITH A FOCUS ON BRIDGES

The Mississippi Department of Transportation reported in November that projects approved to begin construction reached an all-time high in the past fiscal year, shattering the previous record set in FY22 by more than \$255 million.

For Fiscal Year 2024, which ended June 30, more than \$1.2 billion in projects was approved, an 89 percent increase over the average of the previous five years and the most ever approved by the agency. These projects will replace and repair bridges, resurface roadways, make safety improvements and more across the entire state, according to MDOT.

In 2022, Congress increased MDOT's federal funding through the Infrastructure Investment and Jobs Act, which provided Mississippi with more than \$1 billion in additional funding from the Federal Highway Administration over a five-year period.

On the state level, the Mississippi Legislature increased MDOT's appropriation in the 2024 session by \$627 million, which included supplements to MDOT's capacity and maintenance programs. Thirty million dollars was also allocated to the Emergency Road and Bridge Repair Fund (ERBRF). Additionally, MDOT receives \$80 million from the Mississippi Lottery every year, which is used to pave hundreds of miles of rural highways across Mississippi.

In October, the Transportation Commission approved the list of projects funded with the \$30 million the Legislature provided for the ERBRF. This is the fifth round of funding the Legislature has provided since the program was created

in 2018. Since the ERBRF started in 2018, lawmakers have appropriated \$569 million that has funded 298 projects that have repaired 364 bridges in all but two counties.

MPA is one of 10 associations on the ERBRF Advisory Board. The ERBRF Advisory Board this month adopted a resolution recommending the Legislature continue funding for the program focused on city and county bridges.

The list of projects in this round is shown below.

Also, in October the Federal Highway Administration (FHWA) announced \$67.5 million for Mississippi under the Bipartisan Infrastructure Law which dedicates \$40 billion over five years to tackle a backlog of bridge projects that are vital to commuters, emergency responders, truck drivers, and public transit riders.

MDOT received \$67,512,520 for the Central Bridge Bundle project in Lauderdale, Madison, and Newton Counties to replace a total of 13 bridge structures in central Mississippi, according to the FHWA. The aging bridges connect rural Mississippi to urban areas, including the state capital. All 13 bridges do not meet current design standards, have extremely narrow lanes, and pose safety risks to travelers. The narrow widths of the current bridges do not adequately support freight movement through the region. Their replacement is important to the economic competitiveness of the state, as freight movement in Mississippi is anticipated to grow at least 60% by 2050.

AGENCY_NAME	ROUTE_NAME	Proposed Award
Benton County	Pleasant Hill Road	\$ 3,103,550.00
Biloxi	Old Highway 67	\$ 1,696,500.00
Greene County	Old Avera Road	\$ 2,635,436.13
Jefferson Davis County	Sumrall Road	\$ 1,882,500.00
Jones County	Pleasant Grove-Sandersville Road	\$ 2,548,760.66
Neshoba County	CR-210	\$ 4,875,023.11
Pike County	Tanglewood Road	\$ 1,040,050.00
Senatobia	Crossover Road	\$ 1,496,887.00
Sharkey County	Low Water Bridge Road	\$ 2,165,125.64
Sunflower County	N Boliver County Line Rd	\$ 1,355,225.70
Tate County	Looxahoma/Tyro Road	\$ 2,625,000.00
Warren County	Tucker Road	\$ 5,507,597.25
Wayne County	Dew Mills Road	\$ 1,443,399.69

The other project involving Mississippi from the \$635 million in projects announced in October is \$43,920,000 to the Arkansas Department of Transportation for the Helena Bridge Rehabilitation project. The aging Helena Bridge carries U.S. Route 49 across the Mississippi River between Helena, Arkansas and Lula, Mississippi, and supports movement of

freight and significant quantities of agricultural commodities from the Mississippi Delta, one of the most productive farming regions in the country. The Helena Bridge is also the only Mississippi River crossing for a 105-mile stretch – if not operable, diverted traffic and freight would add nearly three hours to their commute, the FHWA said in a press release. ■

SKILLET BARBEQUE CHICKEN DIP

From Delta Magazine
By Cindy Coopwood

DIRECTIONS

INGREDIENTS

- 2 tablespoons olive oil
- 1½ cups rotisserie chicken, shredded
- 6 strips bacon, diced
- 1 medium red onion, diced
- 1 red bell pepper, seeded and diced
- ⅓ cup mild banana peppers, diced (optional)
- ¼ cup green onions, diced
- 1 8-ounce block cream cheese, softened
- ½ cup sour cream
- ¼ cup ranch dressing
- ¼ cup barbecue sauce, plus more for topping
- 1½ cups cheddar cheese, shredded
- tortilla chips for dipping

- Preheat oven to 375 degrees. In a skillet (preferably cast iron) over medium heat, cook diced bacon until crisp. Remove bacon, leaving rendered fat in skillet. Cook red pepper and diced onions until browned and partially caramelized, about 8 to 10 minutes.
- In a large bowl, add the cream cheese, sour cream, ¼-cup of barbecue sauce, and ranch. Stir together until smooth and creamy. Add mixture to skillet.
- Fold the banana peppers (if desired) shredded chicken, half of the green onions and half of the cheddar cheese into cream cheese mixture. Spread mixture out in skillet. Layer the top with enough barbecue sauce to evenly coat, or to taste.
- Add remaining cheese on top and bake uncovered for about 20 to 25 minutes until it's bubbly on the edges and cheese is melted. Halfway through the bake time, sprinkle the bacon pieces over the cheese.
- Serve warm with tortilla chips



The perfect combination of a sweet, smoky, cheesy dip packed with bacon, shredded chicken, red onions, and ranch.

Discover Greater From the Ground Up.

Whether you're purchasing a farm, refinancing, retrofitting or even building a new facility, let our **Agricultural Lending** team be the backbone of your business.

To discover a greater banking experience, visit [ozk.com/agri](https://www.ozk.com/agri) or contact us today at (770) 537-2860.



 **Bank OZK**
Greater awaits™

BRUNINI

ATTORNEYS AT LAW



Trey Jones

John Milner

Gene Wasson

ENVIRONMENTAL LAW GROUP

Brunini has premier expertise in environmental litigation, regulatory permitting and compliance issues as well as due diligence and transactional matters. John Milner was noted by Chambers USA as being "instrumental in developing Brunini's environmental practice" into the leadership position it holds today.

John Milner serves as counsel to the Mississippi Poultry Association and has special expertise in poultry-related environmental issues. Partner Gene Wasson also has impressive abilities in the environmental sector. Partner Trey Jones has significant environmental litigation experience.

*Listing of areas of practice does not indicate any certification of expertise. Any decision with respect to legal service should not be based solely on this or any other advertisement.
Free background information upon request.*

Brunini.com
601-948-3101

TRUMP TAPS LEE ZELDIN TO LEAD EPA - WHAT DOES IT SIGNAL FOR AGRICULTURAL BUSINESSES?

President-elect Donald Trump has selected former New York congressman Lee Zeldin to lead the Environmental Protection Agency (EPA) in his upcoming administration. This appointment signals a potential shift in environmental policy and regulatory approach. Here are the key points about this nomination:

- (1) Zeldin is a former Republican congressman who represented New York's 1st congressional district from 2015 to 2023.
- (2) He lacks extensive experience in environmental policy, having not served on committees with direct oversight of environmental issues during his time in Congress.
- (3) Zeldin has a lifetime score of only 14% from the League of Conservation Voters, indicating a record of frequently voting against environmental legislation.

Trump stated that Zeldin would "ensure fair and swift deregulatory decisions" to "unleash the power of American businesses." Trump asserts that his administration will aim to maintain "the highest environmental standards, including the cleanest air and water on the planet" while pursuing deregulation.

The following are some specific policy and regulatory expectations from the EPA under Administrator Zeldin, who must first be confirmed by the U. S. Senate before taking office:

(1) **Regulatory Rollbacks** - President-Elect Trump has vowed to renew his aggressive deregulatory efforts, including forcing the removal of multiple existing regulations for any new regulation proposed. He has also said he would "stop the flow of American tax dollars that are subsidizing Chinese electric vehicle battery companies" and roll back Biden-era regulations promoting EV adoption. Additionally, he has said he would ban environmental, social and governance (ESG) investments. President-Elect Trump has also pledged to rescind the remaining funding from the Inflation Reduction Act (IRA).

(2) **EPA Budget** - A second Trump Administration likely will significantly target the EPA through smaller budgets and efforts to decrease the size and reach of the agency. Additionally, a Trump EPA could focus on cooperative federalism while adopting a more permissive approach to environmental regulation of interstate commerce. Expect to see a rollback of the EPA's interregional enforcement initiatives and its Environmental Justice programming, particularly its grant funding to environmental organizations, which may be subject

continued on next page
EMERGING TRENDS ■ 31

continued from page 31

to investigations for misuse of such funding alleged by House Republicans.

(3) **Fossil Fuels** - President-Elect Trump has vowed to increase the domestic production of oil and refill the Strategic Petroleum Reserve. He wants to reduce the amount of time it would take to approve drilling permits on public lands by half and increase permit applications to drill on federal land. President-Elect Trump also seeks to make the U.S. the dominant energy producer globally and independent of foreign fuel.

(4) **Climate spending cutbacks** - President-Elect Trump has derided climate spending as a "money grab" for environmental groups, believing that it ships American jobs overseas. He seeks to cut back on spending to retain jobs domestically and could look to impose large tariffs on companies that manufacture goods overseas.

(5) **Withdrawal from Paris Climate Agreement.** President-Elect Trump has cast climate change as a "hoax" and withdrew the U.S. from the 2015 Paris Climate Agreement. Though President Joe Biden rejoined the pact in 2021, President-Elect Trump has pledged to withdraw again.

(6) **Promoting government efficiency.** President-Elect Trump announced he is naming Elon Musk and Vivek Ramaswamy to lead a new federal agency, the Department of Government Efficiency, being called DOGE. The agency will work closely with the White House Office of Management and Budget to reduce employees, end what Supreme Court Justice Neil Gorsuch in a recent decision called "pen and phone regulations" that go beyond laws passed by Congress, and employ technology to make government agencies more efficient. The two directors in a statement said they will utilize legal experts and technology to apply the Supreme court decisions in *West Virginia v. Environmental Protection Agency* and *Loper Bright v. Raimondo*. The first said EPA exceeded the authority given it in climate regulations of power plants, while the second prohibits courts from deferring to agency regulations that go beyond Congressional Authority.

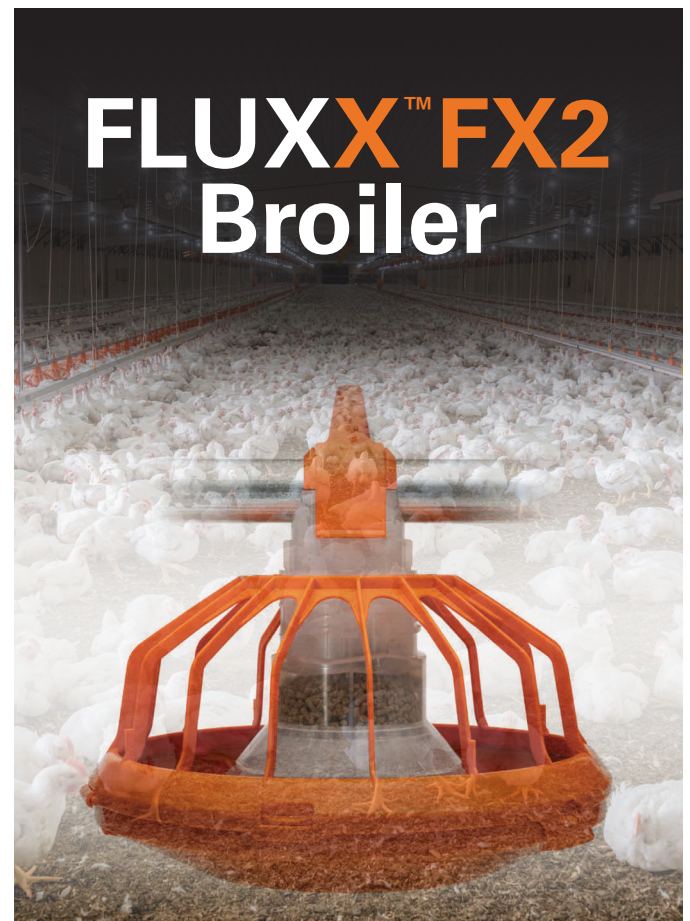
More specific actions by the Trump EPA will be forthcoming in the months ahead as Administrator Zeldin takes office. We will be closely monitoring these developments and providing an update when enough clarity merits a follow-up report.

If you have any questions about this article, please feel free to contact John Milner, MPA Counsel, at jmilner@brunini.com or (601) 960-6842 or Mark Leggett, MPA President, at leggett@mspoultry.org or (601) 932-7560. ■



Americans buy more chicken than any other food at the center of the plate. Chicken consumption per capita has increased nearly every year since the mid-1960s. In 2025, it is estimated Americans will eat 104.2 pounds per person.

National Chicken Council



Maximize your broiler production

Experience **unparalleled efficiency** and **superior results** with the FLUXX™ FX2 broiler feeding system from Big Dutchman. Designed to optimize feed conversion and promote healthier, faster-growing birds, FLUXX™ is the ultimate solution for modern poultry farming.

Join the ranks of successful poultry farmers who trust FLUXX™ for reliable, efficient, and cost-effective broiler feeding.

Upgrade your operations and see the difference for yourself.

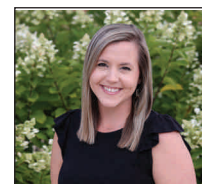


Big Dutchman®

WWW.BIGDUTCHMANUSA.COM

OMELET SHOWDOWN AT THE STATE FAIR

Tannah Christensen, MSU Extension Instructor



Mississippi's annual State Fair brings more than carnival rides and food. Its many attractions and events include the annual 4-H Day at the State Fair. The fairgrounds are filled with green jackets and youth of all ages showcasing their skills. There is something for everyone, from the 4-H idol contests to the Lego building. Amongst the many contests, the Mississippi State's Department of Poultry Science, in collaboration with the Mississippi Egg Marketing Board, brings the 2024 Mississippi State Fair Omelet Cook-off Contest.

Participants were selected by their district to compete at the state level. Participants presented their entry to a panel of judges within 60 minutes. The 14 contestants joined us for the event to fire up their skillets and demonstrate their cooking skills.

Sponsored by the Mississippi Poultry Association, Mississippi Egg Marketing Board, and the Mississippi Beef Council, the event awarded monetary prizes to the 1st, 2nd, and 3rd place winners and the best beef award.

Congratulations to our winners on being selected as top chefs in the 2024 Mississippi State Fair Omelet Cook-off Contest.

1st Place- Belle and Tanner Davis, Forrest County, Cheddar, Bacon, and Steak Omelet

2nd Place- Emaline Swindoll, Yalobusha County, Cheesy Chicken Chili Omelet

3rd Place and Best Beef- Ellie Haffey, Itawamba County, Take Me to Flavortown Omelet



The Mississippi Egg Marketing Board, Mississippi Poultry Association and Mississippi Beef Council are pleased to announce the winners of the 2024 Mississippi State Fair Omelet Cookoff. Pictured (L-R): Tannah Christensen with the Mississippi State University Poultry Science Department; 2nd Place Winner Emaline Swindoll of Yalobusha County; 1st Place Winners Tanner Davis and Belle Davis of Forrest County; 3rd Place Winner and Best Beef Omelet Winner Ellie Haffey of Itawamba County; and Mississippi Egg Marketing Board President, Dr. Ryn Laster.

Other contestants included:

Covington County

Jordyn Grantham- Jo's Sweet Heat Omelet

Oakleigh McCray- Farm Fresh Omelet

Rowdy McCray- Kickin' Philly Omelet

Henry Klein- Henry's Tornado Omelet

Itawamba County

Charlotte Haffey- Charlotte's Fresh Farmhouse Omelet

Penelope Haffey- Extra Mile Omelet

Jasper County

Lucy Holloway- Taco Omelette

Smith County

Zakiah Gillum and Kinleigh McMullan- Agriculture Omelet

Washington County

Hannah Lance- California Sushi Roll Omelet

Our panel of judges, Dr. Angus Catchot- Director of Extension at Mississippi State University; Angela Evans, Anchor and Host for WLBT; Dr. Trent Irby, Associate Director of Extension at Mississippi State University; and Mack Walker, Complex Manager for Tyson Foods, spent the morning evaluating our youth on their cooking and safety skills while tasting a variety of delicious omelets in search of the state's top omelet chef. Thank you to our mistress of Ceremonies, Dr. Ryn Laster- MEMB President, and our special guests, Mississippi Department of Agriculture and Commerce's 2024-2025 Mississippi Agriculture Youth Council members John Clayton Kitchens- State 4-H President and Laynie Dodson- State FFA President for keeping the audience entertained throughout the event.

We look forward to hosting this successful event each year. If you or someone you know is interested in joining the fun, please contact Tannah Christensen, MSU Extension Instructor via email t.christensen@msstate.edu or phone 1.662.867.3175. ■



110 Airport Road South, Suite C
 Pearl, Mississippi 39208

UPCOMING EVENTS:

- | | |
|--|---|
| Jan. 7 — 2025 Legislative Session Begins | Apr. 6 — 2025 Legislative Session Ends |
| Jan. 24 — Dr. Danny Magee Hall Of Fame Portrait | Apr. 10 — Beef And Poultry Expo |
| Jan. — Management School Planning Committee | Apr. — Breeder-Hatchery Planning Committee |
| Feb. 5 — MPA & Egg Marketing Board Legislative Reception | May 19-20 — Poultry Management School |
| Feb.19 — Presentation For Best Chicken Salad
At Dixie National Rodeo | June — MPA Board Of Directors Meeting |
| Apr. 7 — Poultry Health Seminar | Aug. — Breeder-Hatchery Seminar |
| | Sept. 11-14 — MPA Convention, Board Of Directors Meeting,
Allied Industry Meeting |

*At all events involving growers, please practice strict biosecurity procedures.
 Growers can attend convention for \$50, all other events are free.
 The Grower Advisory Committee will meet quarterly at the call of the Chairman.*

We Serve the Farmers Who Serve Mississippi

Southern AgCredit is proud to serve the farmers who serve Mississippi. Finance your farm by visiting one of our nearby branches, or online at southernagcredit.com.



Member of the
 Farm Credit
 System